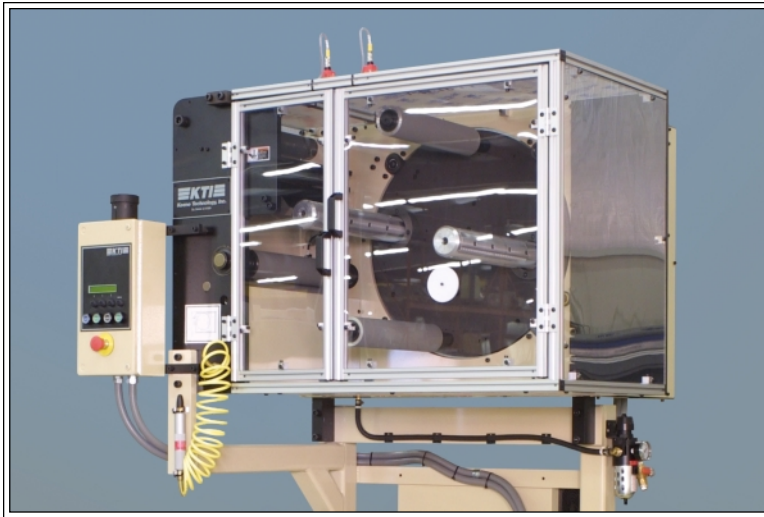
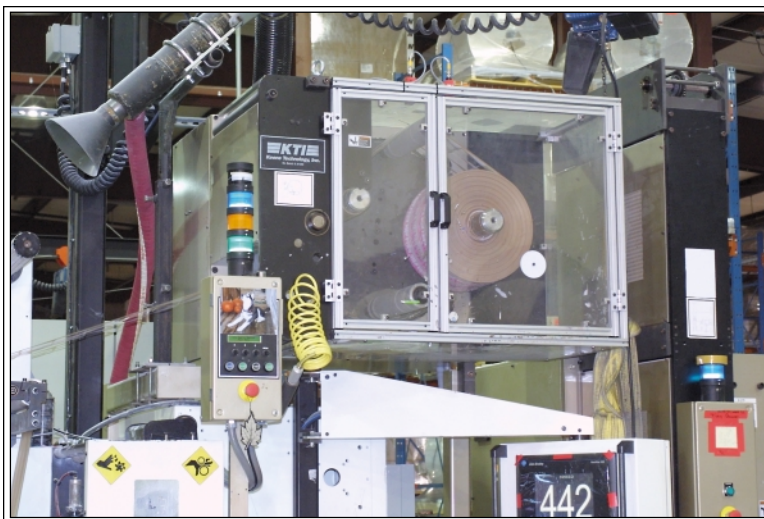


# "MT" Series Matrix Turret Rewinder



Shown: MT 1324-05



MT Matrix Rewinder: Actual Installation

**Eliminates Press Stops for Removal of Matrix Waste**

**Combined with a KTI Butt Splicer and Turret Rewinder, this Unit is the Last Step to Full Label Press Automation.**

## **Standard Features:**

- Automatic Web Transfer at Process Line Speed
- High Speed Nip and Web Cut
- Taper and Linear Winding Tension
- Three Inch Diameter Pneumatic Spindles
- Automatic Transfer to New Core at Selected Roll Diameter
- Automatic Microprocessor Control
- Compact Design
- Industry Standard Components
- Non-Stick Idler Rollers
- Quieter Than Vacuum Systems
- Eliminates Loss of Climate Controlled Air
- Low Operating Costs

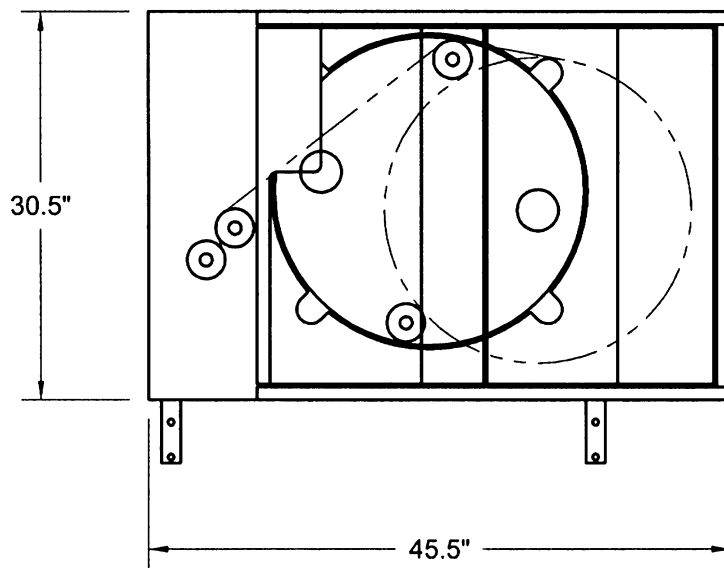
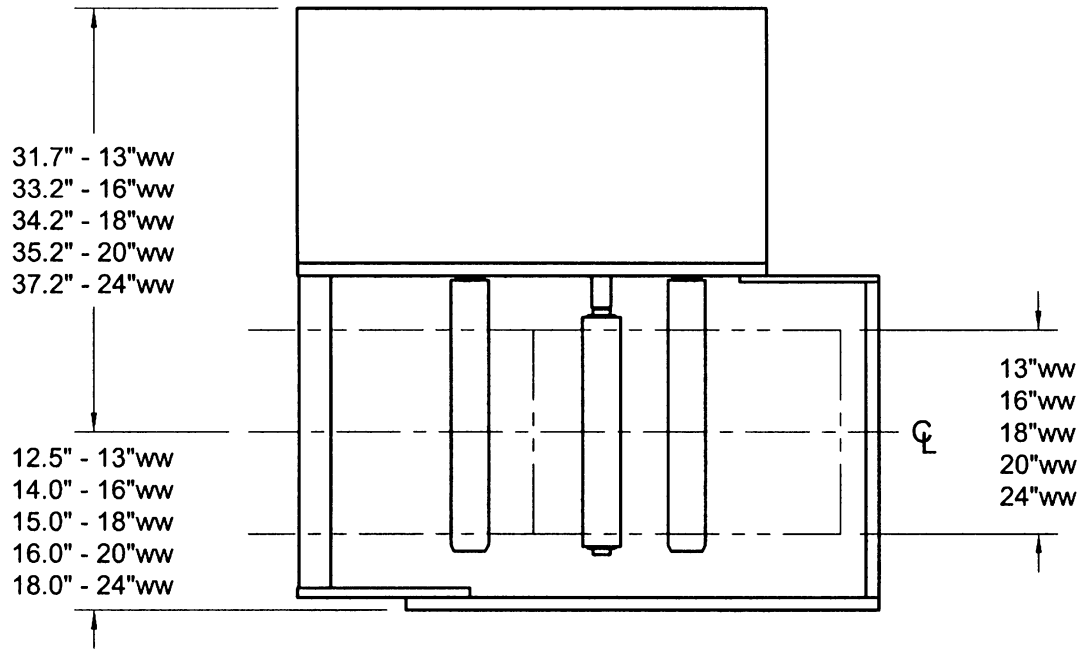
## **Specifications:**

- Two (2) Spindle Configuration
- Rewound Web Width: Up to 24 Inches (609 mm)
- Rewound Roll Diameter: Up to 24 Inches (609 mm)
- Splice Speed: Up to 800 FPM (243 MPM)

## **Options:**

- Lay-On Roller for Non-Uniform Label Shapes

14357 Commercial Parkway  
South Beloit, IL 61080  
Phone: 815-624-8989  
Fax: 815-624-4223  
Internet: [www.keenotech.com](http://www.keenotech.com)  
E-mail: [info@keenotech.com](mailto:info@keenotech.com)



MT MATRIX TURRET REWIND  
 DIMENSIONS SUBJECT TO CHANGE WITHOUT NOTICE